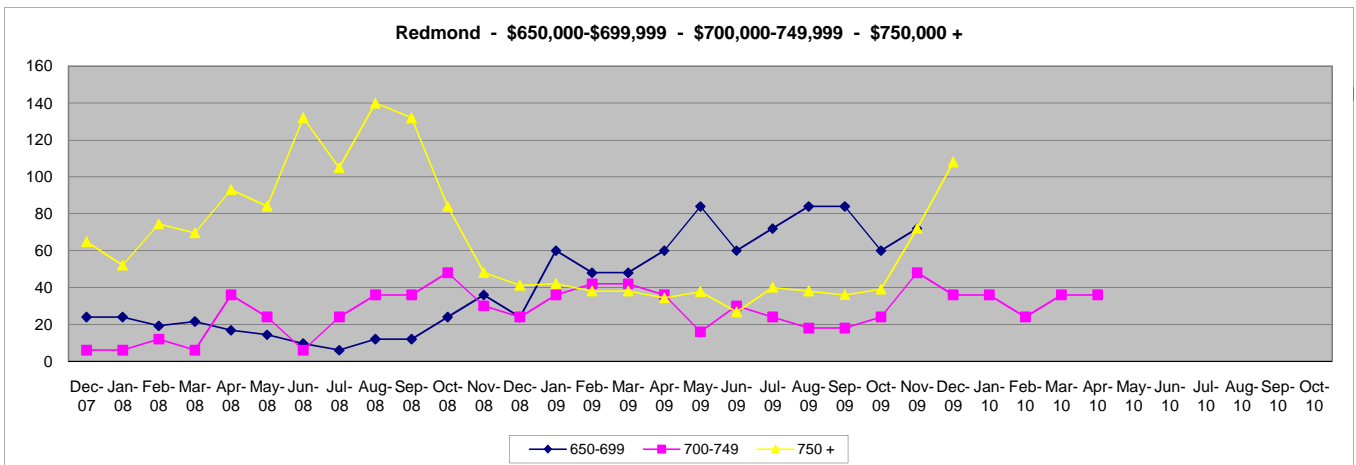
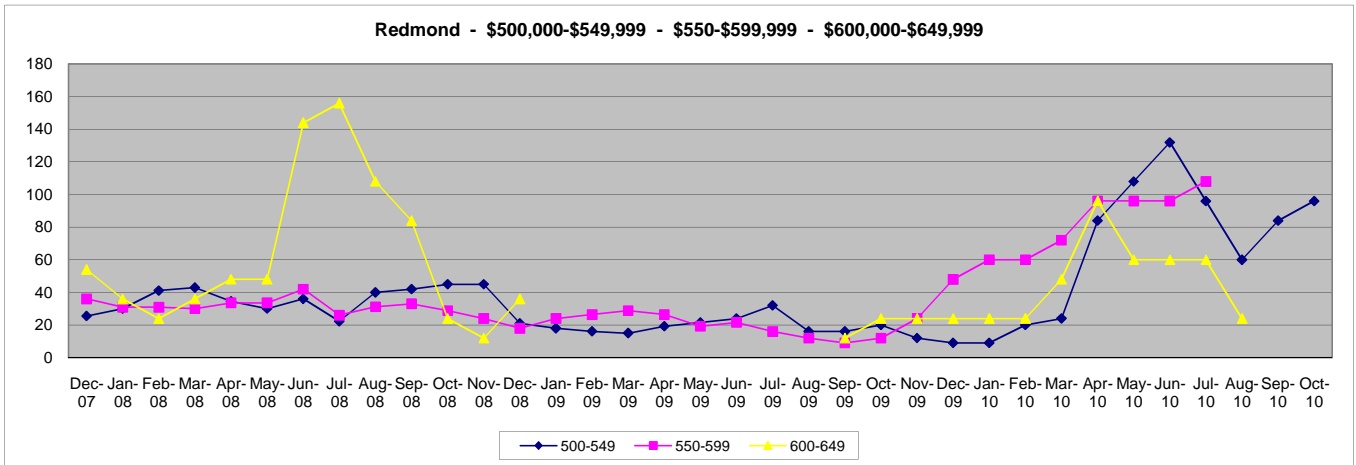
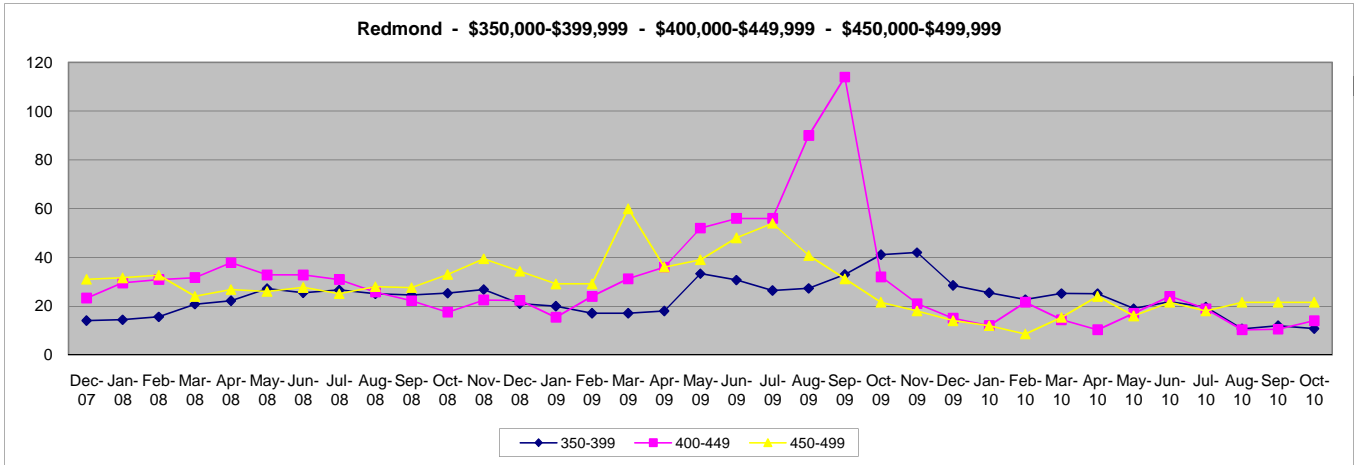
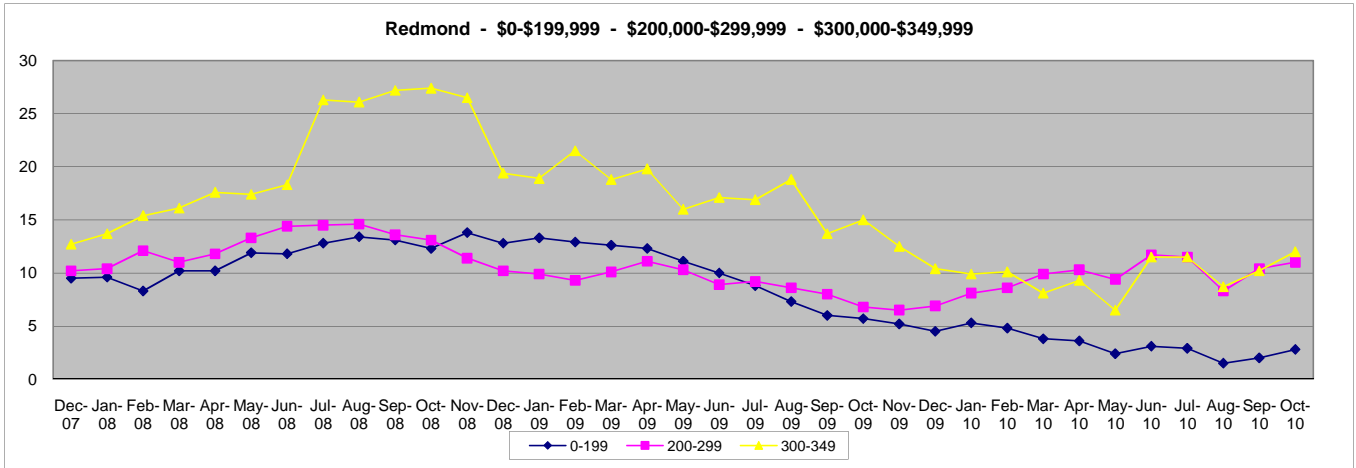


Absorption Rates for Redmond

The charts below show the # of month it will take to sell our current inventory

| | All | 0-199 | 200-299 | 300-349 | 350-399 | 400-449 | 450-499 | 500-549 | 550-599 | 600-649 | 650-699 | 700-749 | 750 + |
|--------|-----|-------|---------|---------|---------|---------|---------|---------|---------|---------|---------|---------|-------|
| Oct-09 | 7.5 | 5.7 | 6.8 | 15 | 41.1 | 32 | 21.6 | 20 | 12 | 24 | 60 | 24 | 39 |
| Nov-09 | 6.8 | 5.2 | 6.5 | 12.5 | 42 | 21 | 18 | 12 | 24 | 24 | 72 | 48 | 72 |
| Dec-09 | 6 | 4.5 | 6.9 | 10.4 | 28.5 | 15 | 14 | 9 | 48 | 24 | | 36 | 108 |
| Jan-10 | 6.7 | 5.3 | 8.1 | 9.9 | 25.5 | 12 | 12 | 9 | 60 | 24 | | 36 | |
| Feb-10 | 6.3 | 4.8 | 8.6 | 10.1 | 22.7 | 21.6 | 8.6 | 20 | 60 | 24 | | 24 | |
| Mar-10 | 5.8 | 3.8 | 9.9 | 8.1 | 25.2 | 14.4 | 15.4 | 24 | 72 | 48 | | 36 | |
| Apr-10 | 5.9 | 3.6 | 10.3 | 9.3 | 25.1 | 10.3 | 24 | 84 | 96 | 96 | | 36 | |
| May-10 | 4.5 | 2.4 | 9.4 | 6.5 | 19 | 17.1 | 16 | 108 | 96 | 60 | | | |
| Jun-10 | 5.5 | 3.1 | 11.7 | 11.5 | 21.8 | 24 | 21.6 | 132 | 96 | 60 | | | |
| Jul-10 | 5.2 | 2.9 | 11.5 | 11.5 | 19.6 | 18.9 | 18 | 96 | 108 | 60 | | | |
| Aug-10 | 3 | 1.5 | 8.3 | 8.7 | 10.7 | 10.3 | 21.6 | 60 | | 24 | | | |
| Sep-10 | 3.6 | 2 | 10.4 | 10.2 | 12 | 10.5 | 21.6 | 84 | | | | | |
| Oct-10 | 4.5 | 2.8 | 11 | 12 | 10.8 | 14 | 21.6 | 96 | | | | | |



Information deemed reliable but not guaranteed. Based on stats from MLS sold counts from the last 12 months and current active listings counts.

Courtesy of The Pam Lester Team